

ST. TAMMANY PARISH COUNCIL

ORDINANCE

ORDINANCE CALENDAR NO: 5667

ORDINANCE COUNCIL SERIES NO: \_\_\_\_\_

COUNCIL SPONSOR: DEAN/BRISTER

PROVIDED BY: LEGAL DEPARTMENT

INTRODUCED BY: \_\_\_\_\_

SECONDED BY: \_\_\_\_\_

ON THE 1 DAY OF SEPTEMBER, 2016

ORDINANCE TO AUTHORIZE THE PARISH OF ST. TAMMANY, THROUGH THE OFFICE OF THE PARISH PRESIDENT, TO GRANT A NON-EXCLUSIVE UTILITY SERVITUDE TO ATMOS ENERGY CORPORATION ON PARISH PROPERTY ALONG HWY 434 (WARD 7, DISTRICT 11).

WHEREAS, Atmos Energy Corporation ("Atmos") seeks to install one or more gas lines along Hwy 434 and within Parish property occupied by the St. Tammany Parish Coroner as depicted by the exhibit attached hereto; and

WHEREAS, there is a need an a public purpose for the installation of gas utility lines providing natural gas services to the area; and

WHEREAS, Parish shall receive fair market value for the granting of the servitude, to be determined by appraisal.

THE PARISH OF ST. TAMMANY HEREBY ORDAINS: that the Parish of St. Tammany, through the Office of the Parish President, is authorized to sign any and all documents necessary to effectuate the granting of a servitude to Atmos Energy Corporation, along the locations depicted on the exhibit attached hereto.

BE IT FURTHER RESOLVED, that any and all actions previously taken by the Office of the Parish President in furtherance of the actions contemplated herein are ratified and accepted accordingly.

REPEAL: All ordinances or parts of Ordinances in conflict herewith are hereby repealed.

SEVERABILITY: If any provision of this Ordinance shall be held to be invalid, such invalidity shall not affect other provisions herein which can be given effect without the invalid provision and to this end the provisions of this Ordinance are hereby declared to be severable.

EFFECTIVE DATE: This Ordinance shall become effective fifteen (15) days after adoption.

MOVED FOR ADOPTION BY: \_\_\_\_\_ SECONDED BY: \_\_\_\_\_

WHEREUPON THIS ORDINANCE WAS SUBMITTED TO A VOTE AND RESULTED IN THE FOLLOWING:

YEAS: \_\_\_\_\_

NAYS: \_\_\_\_\_

ABSTAIN: \_\_\_\_\_

ABSENT: \_\_\_\_\_

THIS ORDINANCE WAS DECLARED DULY ADOPTED AT A REGULAR MEETING OF THE PARISH COUNCIL ON THE 6 DAY OF OCTOBER , 2016 ; AND BECOMES ORDINANCE COUNCIL SERIES NO \_\_\_\_\_.

---

MARTY DEAN, COUNCIL CHAIRMAN

ATTEST:

---

THERESA L. FORD, COUNCIL CLERK

---

PATRICIA P. BRISTER, PARISH PRESIDENT

Published Introduction: AUGUST 25 , 2016

Published Adoption: \_\_\_\_\_, 2016

Delivered to Parish President: \_\_\_\_\_, 2016 at \_\_\_\_\_

Returned to Council Clerk: \_\_\_\_\_, 2016 at \_\_\_\_\_

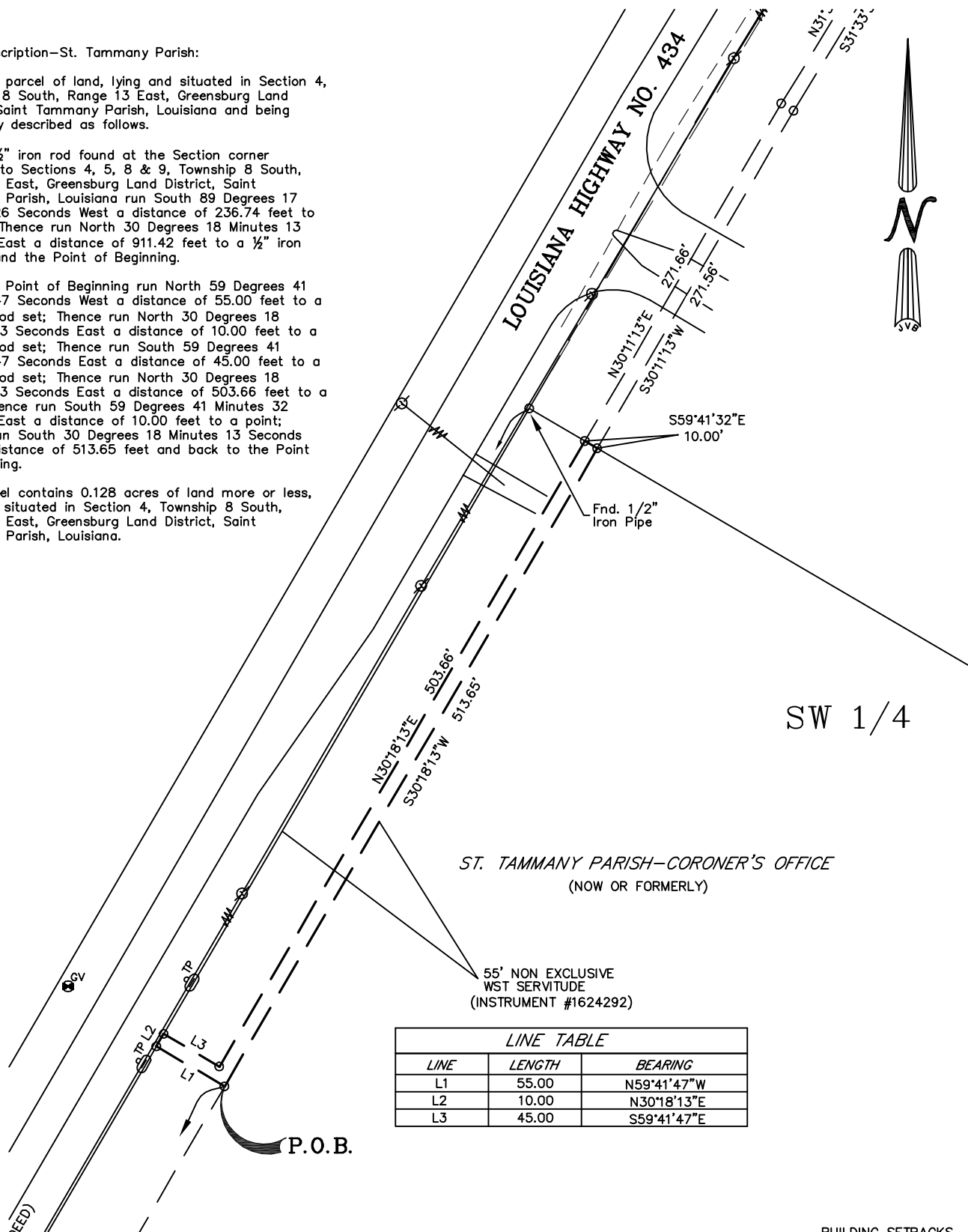
**Legal Description—St. Tammany Parish:**

A certain parcel of land, lying and situated in Section 4, Township 8 South, Range 13 East, Greensburg Land District, Saint Tammany Parish, Louisiana and being more fully described as follows.

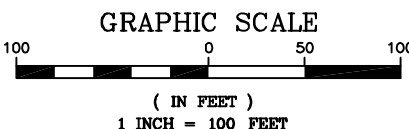
From a 1/2" iron rod found at the Section corner common to Sections 4, 5, 8 & 9, Township 8 South, Range 13 East, Greensburg Land District, Saint Tammany Parish, Louisiana run South 89 Degrees 17 Minutes 26 Seconds West a distance of 236.74 feet to a point; Thence run North 30 Degrees 18 Minutes 13 Seconds East a distance of 911.42 feet to a 1/2" iron rod set and the Point of Beginning.

From the Point of Beginning run North 59 Degrees 41 Minutes 47 Seconds West a distance of 55.00 feet to a 1/2" iron rod set; Thence run North 30 Degrees 18 Minutes 13 Seconds East a distance of 10.00 feet to a 1/2" iron rod set; Thence run South 59 Degrees 41 Minutes 47 Seconds East a distance of 45.00 feet to a 1/2" iron rod set; Thence run North 30 Degrees 18 Minutes 13 Seconds East a distance of 503.66 feet to a point; Thence run South 59 Degrees 41 Minutes 32 Seconds East a distance of 10.00 feet to a point; Thence run South 30 Degrees 18 Minutes 13 Seconds West a distance of 513.65 feet and back to the Point of Beginning.

Said parcel contains 0.128 acres of land more or less, lying and situated in Section 4, Township 8 South, Range 13 East, Greensburg Land District, Saint Tammany Parish, Louisiana.



LINE TABLE		
LINE	LENGTH	BEARING
L1	55.00	N59°41'47"W
L2	10.00	N30°18'13"E
L3	45.00	S59°41'47"E



- LEGEND**
- 1/2" Iron Rod Set
  - 1/2" Iron Rod Found
  - ⊕ Cross

**BUILDING SETBACKS**  
 (\* Verify Prior to Construction)

- Front Setback.....\*
- Side Setback.....\*
- Rear Setback.....\*

ADDRESS: LA. HWY. 434

I CERTIFY THAT THIS PLAT DOES REPRESENT AN ACTUAL GROUND SURVEY AND THAT TO THE BEST OF MY KNOWLEDGE NO ENCROACHMENTS EXIST EITHER WAY ACROSS ANY OF THE PROPERTY LINES, EXCEPT AS SHOWN.

PROPERTY IS SURVEYED IN ACCORDANCE WITH THE LOUISIANA "MINIMUM STANDARDS FOR PROPERTY BOUNDARY SURVEYS" FOR A CLASS D SURVEY. BEARINGS ARE BASED ON RECORD BEARINGS UNLESS NOTED OTHERWISE.

ENCUMBRANCES SHOWN HEREON ARE NOT NECESSARILY EXCLUSIVE. ENCUMBRANCES OF RECORD AS SHOWN ON TITLE OPINION OR TITLE POLICY WILL BE ADDED HERETO UPON REQUEST, AS SURVEYOR HAS NOT PERFORMED ANY TITLE SEARCH OR ABSTRACT.

F.I.R.M. No. 225205 0275 C  
 F.I.R.M. Date 10/17/89  
 ZN: C B.F.E. N/A  
 \* Verify prior to construction with Local Governing Body.

**DRAWING NO.**  
20160295

**DATE:**  
6/21/16

**J.V. Burkes & Associates, Inc.**

SURVEYING      ENGINEERING      ENVIRONMENTAL

1805 Shortcut Highway  
 Slidell, Louisiana 70458  
 E-mail: jvbassoc@jvburkes.com

Phone: 985-649-0075    Fax: 985-649-0154

**DRAWN BY:**  
JDL

**CHECKED BY:**  
RMK

**SCALE:**  
1" = 100'

**EXHIBIT "B"**  
**A SURVEY MAP OF A**  
**10' ATMOS ENERGY SERVITUDE**  
**IN SECTION 4, T-8-S, R-14-E, GLD**  
**ST. TAMMANY PARISH, LOUISIANA**

**CERTIFIED TO:** ATMOS ENERGY

**SURVEYED BY:**

**SEAN M. BURKES**  
 LA REG. No. 4785

### **Ordinance Administrative Comment**

ORDINANCE TO AUTHORIZE THE PARISH OF ST. TAMMANY, THROUGH THE OFFICE OF THE PARISH PRESIDENT, TO GRANT A NON-EXCLUSIVE UTILITY SERVITUDE TO ATMOS ENERGY CORPORATION ON PARISH PROPERTY ALONG HWY 434 (WARD 7, DISTRICT 11).

Atmos Energy Corporation has requested a gas utility servitude along Hwy 434 fronting the Coroner's Office which is owned by St. Tammany Parish. The purpose of the servitude is to run gas utilities north along Hwy 434. Parish will receive fair market value based on an appraisal through cash payment or exchange of equivalent value.