

ST. TAMMANY PARISH COUNCIL

ORDINANCE

ORDINANCE CALENDAR NO: 6235

ORDINANCE COUNCIL SERIES NO: \_\_\_\_\_

COUNCIL SPONSOR: LORINO/BRISTER

PROVIDED BY: PUBLIC WORKS

INTRODUCED BY: \_\_\_\_\_

SECONDED BY: \_\_\_\_\_

ON THE 5 DAY OF SEPTEMBER , 2019

AN ORDINANCE ACCEPTING FINALIZED SUBDIVISIONS INTO THE ROAD & DRAINAGE INVENTORIES, SPECIFICALLY RUELLE COURT SUBDIVISION (WARD 1, DISTRICT 1)

WHEREAS, Developer/Owner(s) have dedicated the rights of ways to the public as indicated on the finalized subdivision plats recorded in the Clerk of Courts office.

THE PARISH OF ST. TAMMANY HEREBY ORDAINS: SECTION I: All of the area within right-of-way, the road base, surface, drainage ditches, culverts, laterals, canals, and appurtenances thereunto belonging to or otherwise appertaining to the below indicated developments and authorized in the Resolutions stated, shall e incorporated into the Parish Selective Maintenance System.

Ruelle Court Subdivision, Resolution Planning Commission Series # 16-067

SECTION II: All Parish regulations, policies, procedures and operating methods pertaining to the Parish Selective Maintenance System shall apply to the aforementioned developments.

Streets to be accepted into maintenance system are named:

DEVELOPMENT/SUBDIVISION/STREET

Ruelle Court

Ruelle Court Subdivision Pond

REPEAL: All ordinances or parts of Ordinances in conflict herewith are hereby repealed.

SEVERABILITY: If any provision of this Ordinance shall be held to be invalid, such invalidity shall not affect other provisions herein which can be given effect without the invalid provision and to this end the provisions of this Ordinance are hereby declared to be severable.

EFFECTIVE DATE: This Ordinance shall become effective fifteen (15) days after adoption.

MOVED FOR ADOPTION BY: \_\_\_\_\_ SECONDED BY: \_\_\_\_\_

WHEREUPON THIS ORDINANCE WAS SUBMITTED TO A VOTE AND RESULTED IN THE FOLLOWING:

YEAS: \_\_\_\_\_

NAYS: \_\_\_\_\_

ABSTAIN: \_\_\_\_\_

ABSENT: \_\_\_\_\_

THIS ORDINANCE WAS DECLARED DULY ADOPTED AT A REGULAR MEETING OF THE PARISH COUNCIL ON THE 3 DAY OF OCTOBER , 2019 ; AND BECOMES ORDINANCE COUNCIL SERIES NO \_\_\_\_\_.

\_\_\_\_\_  
MICHAEL R. LORINO, JR. , COUNCIL CHAIRMAN

ATTEST:

\_\_\_\_\_  
THERESA L. FORD, COUNCIL CLERK

\_\_\_\_\_  
PATRICIA P. BRISTER, PARISH PRESIDENT

Published Introduction: AUGUST 28 , 2019

Published Adoption: \_\_\_\_\_, 2019

Delivered to Parish President: \_\_\_\_\_, 2019 at \_\_\_\_\_

Returned to Council Clerk: \_\_\_\_\_, 2019 at \_\_\_\_\_




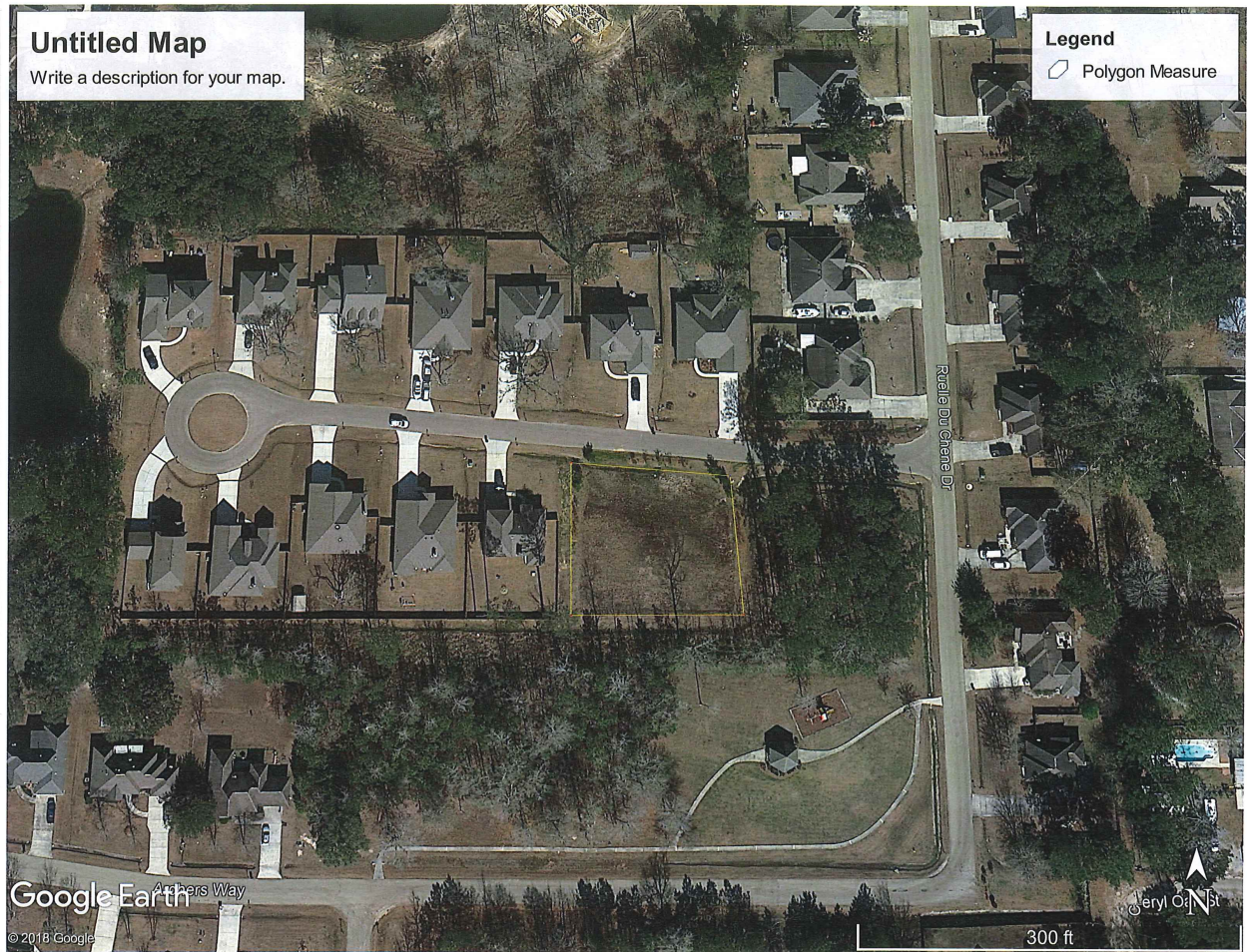


### Untitled Map

Write a description for your map.

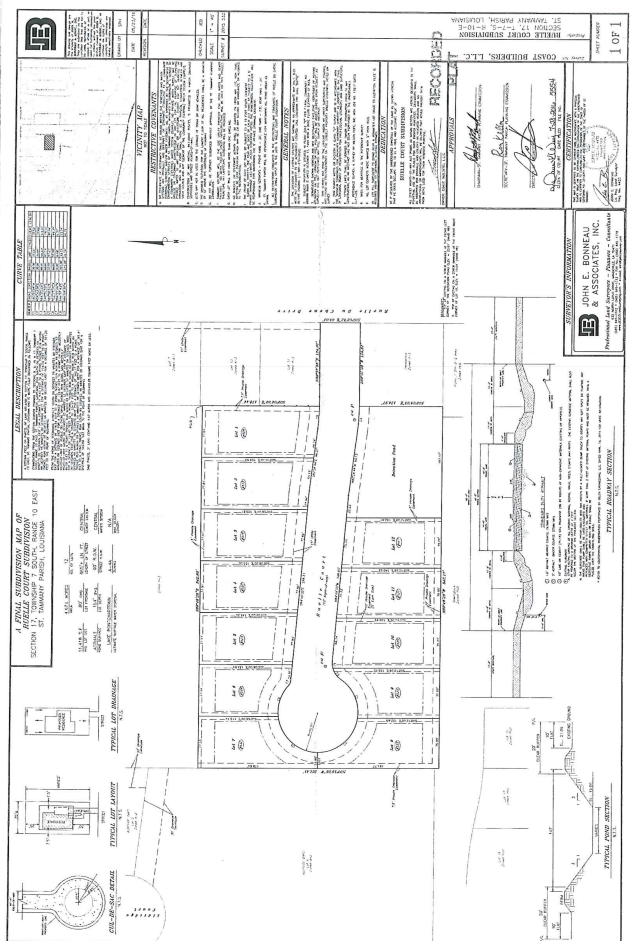
### Legend

 Polygon Measure









**JOHN E. PENNEAU & ASSOCIATES, INC.**  
 PROFESSIONAL ENGINEERS  
 1000 PINE STREET, SUITE 1000  
 NEW ORLEANS, LOUISIANA 70112  
 (504) 581-1111

**RECORDED**  
 11/15/2011  
 11/15/2011  
 11/15/2011

**COAST BUILDERS, L.L.C.**  
 21700 PINE STREET, SUITE 1000  
 NEW ORLEANS, LOUISIANA 70112  
 (504) 885-1111

**SECTION 17**  
 SUBSECTION 1  
 20' WIDE DRIVE TO EAST  
 SIDE OF LOT 17, 18, 19, 20, 21, 22, 23, 24, 25, 26, 27, 28, 29, 30, 31, 32, 33, 34, 35, 36, 37, 38, 39, 40, 41, 42, 43, 44, 45, 46, 47, 48, 49, 50, 51, 52, 53, 54, 55, 56, 57, 58, 59, 60, 61, 62, 63, 64, 65, 66, 67, 68, 69, 70, 71, 72, 73, 74, 75, 76, 77, 78, 79, 80, 81, 82, 83, 84, 85, 86, 87, 88, 89, 90, 91, 92, 93, 94, 95, 96, 97, 98, 99, 100, 101, 102, 103, 104, 105, 106, 107, 108, 109, 110, 111, 112, 113, 114, 115, 116, 117, 118, 119, 120, 121, 122, 123, 124, 125, 126, 127, 128, 129, 130, 131, 132, 133, 134, 135, 136, 137, 138, 139, 140, 141, 142, 143, 144, 145, 146, 147, 148, 149, 150, 151, 152, 153, 154, 155, 156, 157, 158, 159, 160, 161, 162, 163, 164, 165, 166, 167, 168, 169, 170, 171, 172, 173, 174, 175, 176, 177, 178, 179, 180, 181, 182, 183, 184, 185, 186, 187, 188, 189, 190, 191, 192, 193, 194, 195, 196, 197, 198, 199, 200, 201, 202, 203, 204, 205, 206, 207, 208, 209, 210, 211, 212, 213, 214, 215, 216, 217, 218, 219, 220, 221, 222, 223, 224, 225, 226, 227, 228, 229, 230, 231, 232, 233, 234, 235, 236, 237, 238, 239, 240, 241, 242, 243, 244, 245, 246, 247, 248, 249, 250, 251, 252, 253, 254, 255, 256, 257, 258, 259, 260, 261, 262, 263, 264, 265, 266, 267, 268, 269, 270, 271, 272, 273, 274, 275, 276, 277, 278, 279, 280, 281, 282, 283, 284, 285, 286, 287, 288, 289, 290, 291, 292, 293, 294, 295, 296, 297, 298, 299, 300, 301, 302, 303, 304, 305, 306, 307, 308, 309, 310, 311, 312, 313, 314, 315, 316, 317, 318, 319, 320, 321, 322, 323, 324, 325, 326, 327, 328, 329, 330, 331, 332, 333, 334, 335, 336, 337, 338, 339, 340, 341, 342, 343, 344, 345, 346, 347, 348, 349, 350, 351, 352, 353, 354, 355, 356, 357, 358, 359, 360, 361, 362, 363, 364, 365, 366, 367, 368, 369, 370, 371, 372, 373, 374, 375, 376, 377, 378, 379, 380, 381, 382, 383, 384, 385, 386, 387, 388, 389, 390, 391, 392, 393, 394, 395, 396, 397, 398, 399, 400, 401, 402, 403, 404, 405, 406, 407, 408, 409, 410, 411, 412, 413, 414, 415, 416, 417, 418, 419, 420, 421, 422, 423, 424, 425, 426, 427, 428, 429, 430, 431, 432, 433, 434, 435, 436, 437, 438, 439, 440, 441, 442, 443, 444, 445, 446, 447, 448, 449, 450, 451, 452, 453, 454, 455, 456, 457, 458, 459, 460, 461, 462, 463, 464, 465, 466, 467, 468, 469, 470, 471, 472, 473, 474, 475, 476, 477, 478, 479, 480, 481, 482, 483, 484, 485, 486, 487, 488, 489, 490, 491, 492, 493, 494, 495, 496, 497, 498, 499, 500, 501, 502, 503, 504, 505, 506, 507, 508, 509, 510, 511, 512, 513, 514, 515, 516, 517, 518, 519, 520, 521, 522, 523, 524, 525, 526, 527, 528, 529, 530, 531, 532, 533, 534, 535, 536, 537, 538, 539, 540, 541, 542, 543, 544, 545, 546, 547, 548, 549, 550, 551, 552, 553, 554, 555, 556, 557, 558, 559, 560, 561, 562, 563, 564, 565, 566, 567, 568, 569, 570, 571, 572, 573, 574, 575, 576, 577, 578, 579, 580, 581, 582, 583, 584, 585, 586, 587, 588, 589, 590, 591, 592, 593, 594, 595, 596, 597, 598, 599, 600, 601, 602, 603, 604, 605, 606, 607, 608, 609, 610, 611, 612, 613, 614, 615, 616, 617, 618, 619, 620, 621, 622, 623, 624, 625, 626, 627, 628, 629, 630, 631, 632, 633, 634, 635, 636, 637, 638, 639, 640, 641, 642, 643, 644, 645, 646, 647, 648, 649, 650, 651, 652, 653, 654, 655, 656, 657, 658, 659, 660, 661, 662, 663, 664, 665, 666, 667, 668, 669, 670, 671, 672, 673, 674, 675, 676, 677, 678, 679, 680, 681, 682, 683, 684, 685, 686, 687, 688, 689, 690, 691, 692, 693, 694, 695, 696, 697, 698, 699, 700, 701, 702, 703, 704, 705, 706, 707, 708, 709, 710, 711, 712, 713, 714, 715, 716, 717, 718, 719, 720, 721, 722, 723, 724, 725, 726, 727, 728, 729, 730, 731, 732, 733, 734, 735, 736, 737, 738, 739, 740, 741, 742, 743, 744, 745, 746, 747, 748, 749, 750, 751, 752, 753, 754, 755, 756, 757, 758, 759, 760, 761, 762, 763, 764, 765, 766, 767, 768, 769, 770, 771, 772, 773, 774, 775, 776, 777, 778, 779, 780, 781, 782, 783, 784, 785, 786, 787, 788, 789, 790, 791, 792, 793, 794, 795, 796, 797, 798, 799, 800, 801, 802, 803, 804, 805, 806, 807, 808, 809, 810, 811, 812, 813, 814, 815, 816, 817, 818, 819, 820, 821, 822, 823, 824, 825, 826, 827, 828, 829, 830, 831, 832, 833, 834, 835, 836, 837, 838, 839, 840, 841, 842, 843, 844, 845, 846, 847, 848, 849, 850, 851, 852, 853, 854, 855, 856, 857, 858, 859, 860, 861, 862, 863, 864, 865, 866, 867, 868, 869, 870, 871, 872, 873, 874, 875, 876, 877, 878, 879, 880, 881, 882, 883, 884, 885, 886, 887, 888, 889, 890, 891, 892, 893, 894, 895, 896, 897, 898, 899, 900, 901, 902, 903, 904, 905, 906, 907, 908, 909, 910, 911, 912, 913, 914, 915, 916, 917, 918, 919, 920, 921, 922, 923, 924, 925, 926, 927, 928, 929, 930, 931, 932, 933, 934, 935, 936, 937, 938, 939, 940, 941, 942, 943, 944, 945, 946, 947, 948, 949, 950, 951, 952, 953, 954, 955, 956, 957, 958, 959, 960, 961, 962, 963, 964, 965, 966, 967, 968, 969, 970, 971, 972, 973, 974, 975, 976, 977, 978, 979, 980, 981, 982, 983, 984, 985, 986, 987, 988, 989, 990, 991, 992, 993, 994, 995, 996, 997, 998, 999, 1000

**TYPICAL LOT LAYOUT**

**TYPICAL LOT ARRANGEMENT**

**TYPICAL DRIVEWAY**

**CONCRETE DRIVEWAY**

**ASPHALT DRIVEWAY**

**GRAVEL DRIVEWAY**

**CONCRETE DRIVEWAY**

**ASPHALT DRIVEWAY**

**GRAVEL DRIVEWAY**

**CONCRETE DRIVEWAY**

**ASPHALT DRIVEWAY**

**GRAVEL DRIVEWAY**

**CONCRETE DRIVEWAY**

**ASPHALT DRIVEWAY**

**GRAVEL DRIVEWAY**

**CONCRETE DRIVEWAY**

**ASPHALT DRIVEWAY**

**GRAVEL DRIVEWAY**

**CONCRETE DRIVEWAY**

**ASPHALT DRIVEWAY**

**GRAVEL DRIVEWAY**

**CONCRETE DRIVEWAY**

**ASPHALT DRIVEWAY**

**GRAVEL DRIVEWAY**

**CONCRETE DRIVEWAY**

**ASPHALT DRIVEWAY**

**GRAVEL DRIVEWAY**

**CONCRETE DRIVEWAY**

**ASPHALT DRIVEWAY**

**GRAVEL DRIVEWAY**

**CONCRETE DRIVEWAY**

**ASPHALT DRIVEWAY**

**CONCRETE DRIVEWAY**

**ASPHALT DRIVEWAY**

**GRAVEL DRIVEWAY**

**CONCRETE DRIVEWAY**

**ASPHALT DRIVEWAY**

**GRAVEL DRIVEWAY**

**CONCRETE DRIVEWAY**

**ASPHALT DRIVEWAY**

**GRAVEL DRIVEWAY**

**CONCRETE DRIVEWAY**

**ASPHALT DRIVEWAY**

**GRAVEL DRIVEWAY**

**CONCRETE DRIVEWAY**

**ASPHALT DRIVEWAY**

**GRAVEL DRIVEWAY**

**CONCRETE DRIVEWAY**

**ASPHALT DRIVEWAY**

**GRAVEL DRIVEWAY**

**CONCRETE DRIVEWAY**

**ASPHALT DRIVEWAY**

**GRAVEL DRIVEWAY**

**CONCRETE DRIVEWAY**

**ASPHALT DRIVEWAY**

**GRAVEL DRIVEWAY**

**CONCRETE DRIVEWAY**

**ASPHALT DRIVEWAY**

**GRAVEL DRIVEWAY**

**CONCRETE DRIVEWAY**

**ASPHALT DRIVEWAY**

**GRAVEL DRIVEWAY**

**CONCRETE DRIVEWAY**

**ASPHALT DRIVEWAY**

**GRAVEL DRIVEWAY**

**CONCRETE DRIVEWAY**

**ASPHALT DRIVEWAY**

**GRAVEL DRIVEWAY**

**CONCRETE DRIVEWAY**

**ASPHALT DRIVEWAY**

**GRAVEL DRIVEWAY**

**CONCRETE DRIVEWAY**

**ASPHALT DRIVEWAY**

**GRAVEL DRIVEWAY**

**CONCRETE DRIVEWAY**

**ASPHALT DRIVEWAY**

**GRAVEL DRIVEWAY**

**CONCRETE DRIVEWAY**

**ASPHALT DRIVEWAY**

**GRAVEL DRIVEWAY**

**CONCRETE DRIVEWAY**

**ASPHALT DRIVEWAY**

**GRAVEL DRIVEWAY**

**CONCRETE DRIVEWAY**

**ASPHALT DRIVEWAY**

**GRAVEL DRIVEWAY**

**CONCRETE DRIVEWAY**

**ASPHALT DRIVEWAY**

**GRAVEL DRIVEWAY**

**CONCRETE DRIVEWAY**

**ASPHALT DRIVEWAY**

**GRAVEL DRIVEWAY**

**CONCRETE DRIVEWAY**

**ASPHALT DRIVEWAY**

**GRAVEL DRIVEWAY**

**CONCRETE DRIVEWAY**

**ASPHALT DRIVEWAY**

**GRAVEL DRIVEWAY**

**CONCRETE DRIVEWAY**

**ASPHALT DRIVEWAY**

**GRAVEL DRIVEWAY**

**CONCRETE DRIVEWAY**

**ASPHALT DRIVEWAY**

**GRAVEL DRIVEWAY**

**CONCRETE DRIVEWAY**

**ASPHALT DRIVEWAY**

**GRAVEL DRIVEWAY**

**CONCRETE DRIVEWAY**

**ASPHALT DRIVEWAY**

**GRAVEL DRIVEWAY**

**CONCRETE DRIVEWAY**

**ASPHALT DRIVEWAY**

**GRAVEL DRIVEWAY**

**CONCRETE DRIVEWAY**

**ASPHALT DRIVEWAY**

**GRAVEL DRIVEWAY**

**CONCRETE DRIVEWAY**

**ASPHALT DRIVEWAY**

**GRAVEL DRIVEWAY**

**CONCRETE DRIVEWAY**

**ASPHALT DRIVEWAY**

**GRAVEL DRIVEWAY**

**CONCRETE DRIVEWAY**

**ASPHALT DRIVEWAY**

**GRAVEL DRIVEWAY**

**CONCRETE DRIVEWAY**

**ASPHALT DRIVEWAY**

**GRAVEL DRIVEWAY**

**CONCRETE DRIVEWAY**

**ASPHALT DRIVEWAY**

**GRAVEL DRIVEWAY**

**CONCRETE DRIVEWAY**

**ASPHALT DRIVEWAY**

**GRAVEL DRIVEWAY**

**CONCRETE DRIVEWAY**

**ASPHALT DRIVEWAY**

**GRAVEL DRIVEWAY**

**CONCRETE DRIVEWAY**

**ASPHALT DRIVEWAY**

**GRAVEL DRIVEWAY**

**CONCRETE DRIVEWAY**

**ASPHALT DRIVEWAY**

**GRAVEL DRIVEWAY**

**CONCRETE DRIVEWAY**

**ASPHALT DRIVEWAY**

**GRAVEL DRIVEWAY**

**CONCRETE DRIVEWAY**

**ASPHALT DRIVEWAY**

**GRAVEL DRIVEWAY**

**CONCRETE DRIVEWAY**

## ADMINISTRATIVE COMMENT

Reference No. \_\_\_\_\_

Administrative Department: Public Works

PURPOSE: To accept finalized subdivision into the road inventory.  
Developer/Owner(s) have dedicated the rights of way to the public as indicated on the finalized subdivision plats recorded in the Clerk of Court's Office. The warranty obligations for said developments were released and/or called by Resolution Council Series No. C-5008.

RECOMMENDATION: The Public Works Department recommends adoption.